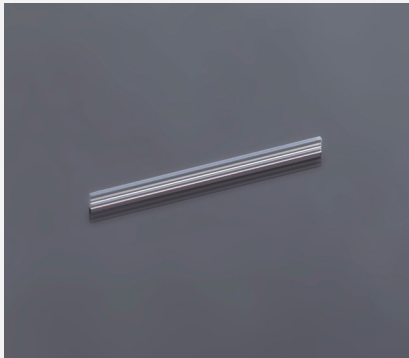


# Fast Axis Collimator

## FAC160



### Features and Advantages

Acylindrical lens for the collimation of the fast axis of diode lasers.

### Product Specifications

Specification Data	Unit	Value
Material		High-Index IR (Ohara)
Width (W)	mm	0.8 ± 0.05
Thickness (T)	mm	0.25 ± 0.01
Clear aperture	mm <sup>2</sup>	(L-0.5) × 0.25
Refractive index n @ 980 nm		> 1.9
Effective focal length (EFL) @ 980 nm	mm	0.160
Back focal length (BFL) @ 980 nm	mm	0.034
Numerical aperture (NA)		0.8
Transmission	%	> 99
Power within an angle of ± 3.6 mrad <sup>(1)</sup>	%	> 85

Product Code	ZLE001942 <sup>(2)</sup>	ZLE001939 <sup>(2)</sup>	ZLE002012 <sup>(2)</sup>	
Specification Data	Unit	Value	Value	
Length (L)	mm	12.0 ± 0.05	12.0 ± 0.05	12.0 ± 0.05
AR-Coating	nm	790 - 990	600 - 700	948 - 998
Surface imperfections (DIN ISO 10110-7)		5/7x0.025; C4x0.1; L6x0.025; E0.2	5/7x0.025; C4x0.1; L6x0.025; E0.2	5/7x0.025; C4x0.1; L6x0.025; E0.2

<sup>(1)</sup> Valid for an emitter-height of 1µm and no smile of the laser diode.

<sup>(2)</sup> Example for customization – design, dimensions & coatings on request.

### Product Drawing (mm)

